

WORLDWIDE INSTITUTES  
OF NEURO LINGUISTIC PROGRAMMING

**ADDRESS**

12/85 Bourke Road  
Sydney NSW 2015  
Australia

**CONTACT**

E: [info@nlpworldwide.com](mailto:info@nlpworldwide.com)  
[www.nlpworldwide.com](http://www.nlpworldwide.com)

# NLP Trainer & Consultant Certification

28 February to 13 March, 2026  
Caloundra, QLD – Australia



# A Note from Dr. Heidi

Hi, I'm **Dr. Heidi Heron, PsyD**, and I want to personally welcome you to **one of the most transformational experiences you'll ever take**. This training is not just about learning how to **train NLP**—it's about **becoming the most confident, courageous, and authentic version of yourself**.

This will be one of the most **challenging, demanding, and rewarding** experiences you'll go through. You'll be **stripping back to your core**, becoming more **transparent, open to feedback, and truly YOU**. It's not always easy—but the **growth, self-belief, and confidence you'll gain are worth every moment**. One past student was given just **two hours' notice** to deliver a workshop—and he did it with ease. That's the level of confidence and skill this training instills.

**How will you know if you're ready?** If reading this gives you **butterflies** and has you questioning whether you can do it—**you are ready!** The very fact that you're here, considering this challenge, means you're ready for the **next level of growth, mastery, and transformation**.

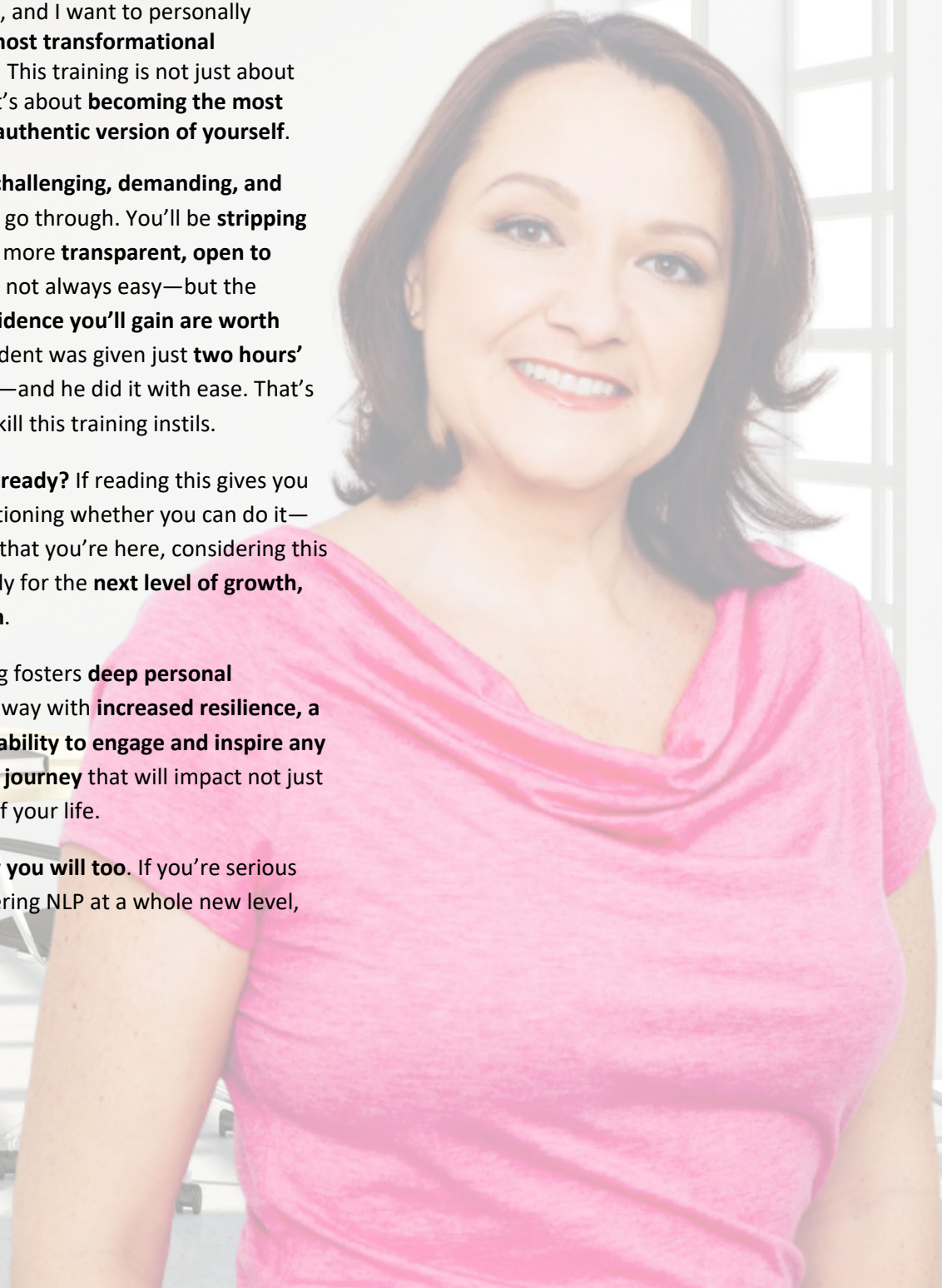
Beyond the skills, this training fosters **deep personal transformation**. You'll walk away with **increased resilience, a powerful presence, and the ability to engage and inspire any audience**. It's a **life-changing journey** that will impact not just your career, but every area of your life.

I love this course, and I **know you will too**. If you're serious about stepping up and mastering NLP at a whole new level, let's talk. **This is your time**.

**Let's do this together.**



– Dr. Heidi Heron, PsyD



# About NLP Worldwide



*Since 1994 we have been training NLP and our focus has always been on integrity, authenticity, standards, and the quality of our NLP training.*

At NLP Worldwide, we believe in training the **whole person—body, mind, and spirit**—to create **lasting transformation**. Our commitment to exceptional quality sets us apart, ensuring every NLP Certification program is led exclusively by **Dr. Heidi Heron, PsyD**. This guarantees **unmatched expertise, integrity, and depth of learning**.

As a **global leader** in NLP, our certification programs **exceed international standards**, equipping you with the most **comprehensive and practical NLP skills** available. With over **31 years of experience** and thousands of graduates worldwide, choosing NLP Worldwide means learning from **one of the most trusted and respected**

## Why Learn *with* The Worldwide Institutes of NLP?

First, notice the word **with**, instead of from. You will learn *with us*. We use the skills of NLP to train NLP – while this may sound commonplace, it unfortunately is not. In nearly 3 decades of training NLP, there have never been two trainings that are the same! We cater to who is in our training room and adapt accordingly. Learning NLP with NLP Worldwide is a full immersion experience. Our interactive and generative learning offers you an experiential learning experience. There is no absorbing information while it is lectured; everything you are taught, you will try on, experience, experiment with, play, learn, and develop a competence for.

We pride ourselves on quality learning, connections, and outcomes. As such, we cap all our courses at 20 participants and the amount of learning opportunities *after* your classroom training ends is phenomenal. We want you to get NLP into your muscle, not just *know* NLP. Additionally, the conversational style of our trainers blends their decades of experience with their wealth of knowledge. Your questions are answered from intimate knowledge of using NLP every day, support and feedback is provided for practical application, and your personal growth is nurtured for you to achieve your desired intentions and outcomes.

# What Our Students Say



## DON'T TAKE OUR WORD FOR IT

Our students use words like **integrity, passion, supportive, down-to-earth, real, approachable, and authentic** to describe our trainers and training. While we may not put on a 'good show' (with loud music, lots of clapping, lights, and cameras), we do provide an outstanding NLP training opportunity.

The path of choosing an NLP trainer, especially for this level of NLP can be a tricky one. Therefore, we'd like to share some of the words from our students who have completed their NLP Trainer & Consultant Certification with us.



**"The most life-changing training I've ever done!"**

"As an educator, I thought I knew how to teach—but this course transformed how I engage, communicate, and inspire. It stretched me beyond my comfort zone and built my confidence in ways I never imagined. Now, I can command a room with ease and authenticity."

— Sarah T., Educator



**"I can now confidently train and coach at a whole new level."**

"This training was challenging, but the growth was incredible. I gained the skills to train groups, coach individuals, and deliver content with confidence. It's not just about NLP—it's about becoming a powerful communicator and leader."

— James M., Executive Coach



**"A masterclass in self-belief and professional excellence."**

"This course pushed me to be more open, more authentic, and more courageous. The daily presentations helped me refine my skills, and the feedback was invaluable. I now deliver training sessions with confidence and ease—whether in a room of 5 or 500."

— Lisa R., Corporate Trainer



**"I didn't just learn NLP—I became it."**

"This program embedded NLP into my thinking, speaking, and coaching. I now integrate these techniques seamlessly into my work, and my clients are seeing powerful results. The depth of learning and the personal transformation are second to none."

— Mark D., NLP Coach & Consultant



**"I now know what it means to trust my unconscious mind!"**

"This was one of the toughest but most rewarding experiences of my life. It's not just a training—it's a personal transformation. I left with more confidence, self-belief, and the ability to create real impact through NLP."

— Emma C., NLP Enthusiast



# Level 3: Trainer & Consultant

*“The ultimate training in the NLP journey. This 14-day training will help you to evolve to a new level of personal and professional mastery to become unconsciously skilled at NLP.” – Dr Heidi Heron*

The NLP Trainer & Consultant Certification is the supreme of all NLP training. This course is aimed at the NLP student who desires to develop their personal and professional capabilities of NLP even more fully into unconscious competence.

The structure this training is conducted in, will allow you to become unconsciously skilled at utilizing the foundation of NLP in a personal or business context; namely to design, present and conduct interactive training, facilitation, coaching and consulting. While this course is specifically aimed at trainers, consultants, coaches, and presenters – it will be equally valuable for sales professionals, managers, leaders, and anyone who communicates with one or many clients.



## WHO IS TRAINING AT THIS LEVEL?

As we move into the highest of trainings, our classes and the focus gets smaller and more specialised. Our students all want to add Training and Facilitation into their offerings, some desire to train NLP programs.



Students who desire to add Training to their skillset



Students who desire to Train NLP Certification

## WHY NLP TRAINER & CONSULTANT CERTIFICATION?

We know that a **trainer in any field is also an exceptional consultant**, and a **consultant is also a great trainer**. Therefore, this two-streamed training will also assist you at gaining outstanding marketing, sales, negotiation, consulting, and facilitation skills. This multi-levelled training is conducted over 14 days layered with skills to build Unconscious Competence with NLP in your personal life, as a Coach, Therapist, Trainer, Leader, Consultant and Manager.

With these skills you will be able to provide training, coaching, facilitation, and consulting to any group, team, individual, or cohort.



## TRAINING FOCUS

Our NLP Trainer & Consultant Certification is built on a three-fold focus:

- (1) **Training Design & Delivery** – equipping you with the skills to develop and present engaging, high-impact training;
- (2) **Deep NLP Embodiment** – ensuring that after 14 days, NLP isn't just something you know, but something you live and breathe;
- (3) **Personal Enhancement** – building confidence, empowerment, and self-mastery.

We train using a method created by Bernice McCarthy, which ensures you fully integrate the why, what, how, and what if of everything you learn. By the end of this program, you'll have an expanded NLP skillset, greater personal empowerment, and the ability to design and deliver transformative training—whether in person or online—with ease and confidence.



## WHAT YOU LEARN



We have been asked countless times about **what makes this NLP Trainer Certification different** than the same type of program offered by other NLP trainers. In fact, we've been asked what makes our training style in general different to others. **We find this a simple answer:** We use NLP to train NLP and in our NLP Trainers & Consulting Certification we teach you to do the same.

In these 14-days you are **learning how to use NLP to train, facilitate, coach, design, deliver anything**. We unpack the methodology of using NLP to develop and train, consult, and coach. You will learn how to format trainings, how to use representational systems, anchors, hypnotic language, meta programs, and metaphors to train and reach your audience's unconscious mind.



You will learn how to use the stage and create spatial anchors, how to build group rapport, how to manage the group, how to manage your own state, how to test and assess for competency, how to know if you should be training, consulting, or coaching; and what the difference is between them.

The expected outcomes – more confidence, more elegance as a trainer, better comprehension – learning – understanding by your students, students who RAVE about you as a trainer, facilitator, coach, or consultant!

**The NLP Trainer & Consultant Certification also certifies you to train NLP Practitioner and Master Practitioner Certification.**

### Some of the skills and topics covered in this training include:

- ✓ Designing and developing training programs
- ✓ Using NLP to train and educate
- ✓ Online training and group facilitation
- ✓ Moving from information to inspiration
- ✓ Consulting for change to individuals and businesses
- ✓ Stage anchors for hypnotic presentations
- ✓ Non-verbal and influential language patterns
- ✓ Using submodalities with states and training anchors
- ✓ Delivering nested loop metaphors
- ✓ Creating and maintaining group rapport
- ✓ Formatting and structuring training sessions with ease
- ✓ Creating a multi-level feedback strategy
- ✓ Building and maintaining a resourceful training state
- ✓ Presenting demonstrations and supervising exercising
- ✓ Bringing play and fun into training & consulting
- ✓ Developing your own style for presentations and training
- ✓ Business marketing and training sales strategies



# Who Is This Training For?

*This training is for NLP Practitioners and Master Practitioners who want to take their skills to the next level—whether to train NLP, enhance coaching and consulting abilities, or deepen personal mastery.*

Like coaches, there are a few specific qualities that make a great NLP Trainers – *curiosity* in people, an *interest* in psychology, an *open mind*, and a *flexible* attitude. If you have these qualities, you are looking down the right track. Now, let's take a closer look at who attends our NLP Trainer Training.

## ASPIRING NLP TRAINERS

If you're ready to **train and certify others in NLP**, this course will give you the **skills, confidence, and certification** to run NLP Practitioner & Master Practitioner programs.

- ✓ Master the art of **training design, delivery, and facilitation**
- ✓ Learn how to **engage any audience**, build group rapport, and create deep transformation
- ✓ Develop a **powerful training presence** and the ability to command a room
- ✓ Gain the certification needed to **deliver**

## COACHES & CONSULTANTS

Whether you work with individuals or organisations, this training will **enhance your ability to facilitate powerful change** using NLP.

- ✓ Learn how to **deliver high-impact workshops and group coaching sessions**
- ✓ Develop **advanced communication skills** to create deeper shifts in clients
- ✓ Understand **how to train, consult, and influence at a leadership level**
- ✓ Expand your business by offering **NLP-based training and consulting services**
- ✓

## LEADERS, EDUCATORS, FACILITATORS

If you teach, lead, or train in any capacity, this program will help you **become a more engaging, effective, and influential presenter**.

- ✓ Enhance your **public speaking, presentation, and facilitation skills**
- ✓ Use NLP to **captivate and connect with any audience**
- ✓ Learn how to **structure and deliver information for maximum retention**
- ✓ Develop the ability to **train and inspire teams, students, or employees**

## PERSONAL GROWTH SEEKERS

Even if you don't plan to train others, this program is an **intensive personal transformation experience** that will build your confidence, courage, and self-belief.

- ✓ Step into **unshakable confidence and presence** in all areas of life
- ✓ Deeply **integrate NLP into your mindset and behaviours**
- ✓ Overcome personal barriers and develop **strong self-leadership skills**
- ✓ Walk away with **greater self-mastery, charisma, and empowerment**

## TRAINING FORMAT: *IMMERSIVE, INTERACTIVE, TRANSFORMATIONAL*

*This residential, hands-on training is designed to fully embed NLP into your mind, body, and muscle memory. Every day, you'll be actively learning, presenting, and integrating the skills of an NLP Trainer in a supportive and engaging environment. With a blend of structured training, group collaboration, and real-world application, this experience ensures you walk away confident, capable, and ready to train others.*



### Residential Experience

We purposefully designed this training for you to live and learn alongside your fellow participants in a **fully immersive environment**. Staying on-site allows for **deeper integration**, fewer distractions, and stronger connections with your training peers.



### Daily Presentations

Every day, you'll be **presenting, receiving feedback, and refining your delivery skills**. This continuous practice builds **unshakable confidence, stage presence, and mastery** in training and facilitating NLP.



### Community Learning

Through **study groups, tandem training, and collaborative exercises**, you'll gain **real-world experience in training design, delivery, and feedback**. This group dynamic fosters **growth, support, and deep connections** that last far beyond the training.



### Final Assessments

The last two days are dedicated to certification evaluations, including a **closed-book test** and a **40-minute presentation on an NLP topic**. These assessments ensure you meet the highest international standards for **NLP Trainer Certification**.







### A Whole Lot of Fun!

Yes, this is an intensive program—but it's also **fun, engaging, and incredibly rewarding!** Expect **laughter, personal breakthroughs, and unforgettable experiences** as you grow, challenge yourself, and celebrate your progress.







# When, Where, How Much?

## When and Where

-  **Dates:** 28 Feb – 13 March 2026
-  **Location:** Grand Pacific Hotel, Caloundra, QLD
-  **Accommodation:** Included in your tuition
-  **Training-Free Day:** Saturday. 8 March

## PAYMENT OPTIONS

-  \$1000 deposit, balance due by 5 Jan 2026
-  4 Payments of \$3375
-  12 Monthly Payments of \$1100
-  18 Monthly Payments of \$755

## TUITION



# \$13,995

Enrol early  
and SAVE

- Enrol by 1 December 2025 – \$12,995
- After 1 December 2025 – \$13,995

14 nights of accommodation is included  
in your tuition (27 Feb to 13 March 2026)

WORLDWIDE INSTITUTES  
OF NEURO LINGUISTIC PROGRAMMING



## READY TO REGISTER NOW

Secure your place in the 2026 NLP Trainer  
and Consultant Certification – only 20  
spaces available.

THAT'S RIGHT



 [www.nlpworldwide.com/enrol/#NLPL3](http://www.nlpworldwide.com/enrol/#NLPL3)



## OUR VENUE & ACCOMMODATION

*Nestled along the stunning Pumicestone Passage, BreakFree Grand Pacific offers a picturesque waterfront retreat perfect for immersive learning and relaxation. Located just steps from Bulcock Beach, this resort combines modern comforts with breathtaking coastal views, creating the ideal environment for both focused training and rejuvenation. With its spacious accommodations, excellent facilities, and proximity to local attractions, it's the perfect setting for your NLP Trainer & Consultant Certification experience.*

### ACCOMMODATION

You will share a 2-bedroom apartment with another participant of the same gender unless you request otherwise. You will each have your own room with queen sized bed and separate bathrooms. The apartments feature modern amenities, include a full kitchen, living area, laundry facilities, and balconies.

### FACILITIES

The resort boasts a heated lagoon pool, two spas, a fully equipped gym, sauna, and a games room, ensuring a comfortable and engaging stay. For dining, all apartments come with kitchen facilities, and there is a communal BBQ area. Numerous cafes and restaurants are within walking distance, offering a variety of dining options.

### LOCAL ATTRACTIONS

The resort's prime location places it close to various attractions, including Australia Zoo (15 km away) and Sea Life Mooloolaba (18 km away), offering opportunities for leisure and exploration during downtime. The nearest airport is Maroochydore (MCY) Airport (21km).



# Terms & Conditions

*The following terms and conditions apply once we have received your enrolment for any training program or bundle of trainings.*

---

## 1

### PAYMENT TERMS

- The Worldwide Institutes of NLP accept payment by Cash, Credit Card (Visa, MasterCard, and American Express), Bank Transfer, Cheque (Australia only) and PayPal.
- You can opt for an upfront payment, a deposit plus balance due 45 days before your course start date or an automated payment plan on a monthly or fortnightly basis. All deposits are non-refundable after 7 days.
- If you have opted to pay your tuition by a payment plan:
  - Your agreed monthly or fortnightly payments will be automatically debited from a credit card, bank account or PayPal account on a pre-organised day of the month – a payment plan schedule will be on your invoice.
  - Any failed payments will incur a \$40 fee.
  - If you have more than 3 failed payments, we will require payment in full within 30 days.
  - At the completion of any training, you will be awarded a provisional certificate until the balance has been paid. At that time, we will forward your full Certificates by post.

## 2

### ABSENCES, CANCELLATION & TRANSFERS

- Certification requires 90% attendance at all trainings. If you need to miss any more than that, you may need to make up the missed time, a \$500 per day fee may apply
- If you are unable to attend any confirmed training the following conditions apply:
  - Your original enrolment date is used to calculate any cancellation or transfer fees
  - Transfer to another single training within your program with more than 45 days notice will incur a \$500 transfer fee for NLP Practitioner, Master Practitioner, & Coaching Foundations (charged per changed course)
  - Transfer to another single training within your program with less than 45 days notice will incur a \$1000 cancellation fee for NLP Practitioner, Master Practitioner, Coaching Foundations & Coach Building Blocks (charged per changed course)
  - Cancellation from your program after 7 days from enrolment will incur a \$1000 cancellation fee
  - Cancellation from your program 90-45 days prior to your start date will incur a 50% cancellation fee
  - Cancellation from your program with less than 45 days notice will incur a 100% cancellation fee
  - Cancellation from any part of the NLP Coach Certification package if any training has already taken place will incur a 100% cancellation fee of the invoiced tuition

## 3

### AGREEMENT & RELEASE

- I understand that if I am currently undergoing any form of treatment from a physician, psychiatrist or psychologist which may affect my training experience I will inform the Worldwide Institutes of NLP.
- I acknowledge that any recording or written material used as part of the training with the Worldwide Institutes of NLP may not be used without prior permission.
- I agree to use the powerful skills, techniques and learning's of NLP with the greatest care and attention.
- I will under no circumstances, misuse the powerful skills, techniques and learnings that I will gain on this training course.
- I understand that photos and testimonials taken during the training may be used by the Worldwide Institutes of NLP in any way they see fit.

WORLDWIDE INSTITUTES  
OF NEURO LINGUISTIC PROGRAMMING

ADDRESS

12/85 Bourke Road  
Sydney, NSW 2015  
Australia

CONTACT

E: info@nlpworldwide.com  
www.nlpworldwide.com

# Let's Chat

We look forward to sharing more of our world of NLP with you soon. If you are looking to improve your communication, become a coach, or become more authentically you, we are glad you found us!

If you haven't yet – let's get a call scheduled to answer your questions and see if NLP Worldwide is a fit for you!

<https://nlpworldwide.as.me/successcoach>

